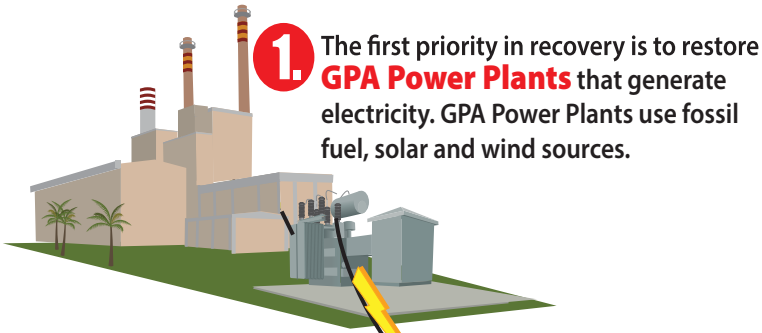


HOW POWER IS RESTORED AFTER TROPICAL STORMS AND TYPHOONS

How GPA Restores Power to Your Home

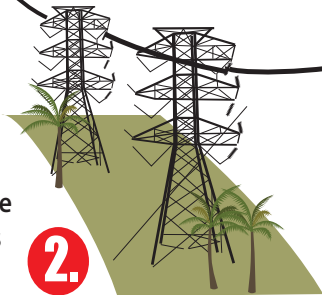
To restore service as quickly as possible, GPA must repair all components in the prioritized order shown below.



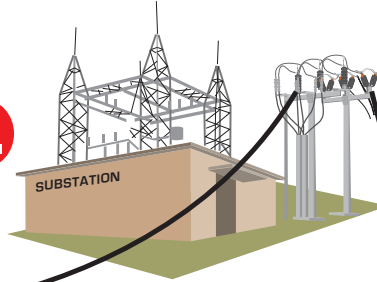
1. The first priority in recovery is to restore **GPA Power Plants** that generate electricity. GPA Power Plants use fossil fuel, solar and wind sources.

The **transmission lines** route the power from the plants to the various substations throughout the island.

2.



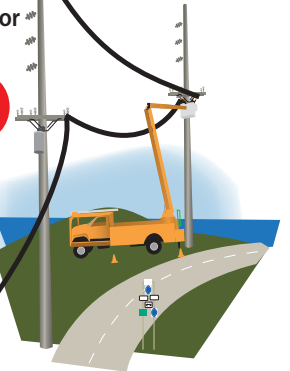
3.



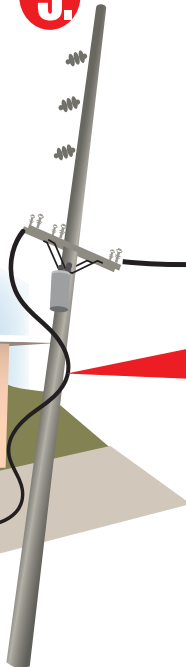
When the **high-voltage electricity** reaches one of the **GPA Substations**, the voltage is lowered so it can be sent to smaller transformers on poles or concrete mounts for servicing homes or other buildings via the

4.

Distribution Lines and Power Poles that run along neighborhood streets are next. These lines carry the electricity to every home, building, traffic lights and street lights.



5.



Proper Services Connections that **homeowners must maintain** are the weatherhead, the lines from the weatherhead to the meter box, the meter box and any associated items to the service panel. (GPA will provide and maintain the actual meter.)

Service Lines run from the Power Pole onto your property. GPA maintains these lines, but homeowners must maintain proper service connections. (See the illustration to identify what type of service connection you have and learn what your responsibilities are.)

Remember, HIGH VOLTAGE KILLS

Downed or dangling power lines can cause electrocution

After the storm passes, look around and be alert for fallen or downed power lines. Consider ALL fallen lines to be "live" to avoid severe injury or death.

Electricity travels through standing water and can cause electrocution

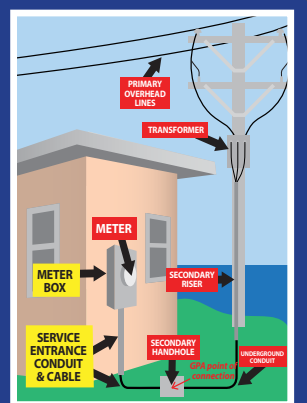
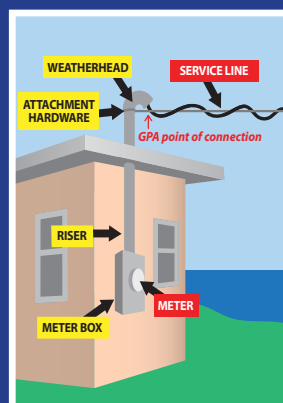
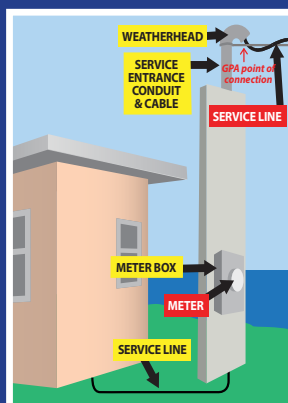
Avoid flooded areas even if they are shallow. Don't step into water in case a downed power line is touching it. Remember, the power line may be some distance away or even out of sight.

Who is Responsible for Fixing What?

If your electrical components are damaged, you may be responsible for repairs. Identify your type of service connection below to learn more.

CUSTOMER'S RESPONSIBILITY

GPA'S RESPONSIBILITY



Want to learn more?
www.guampowerauthority.com