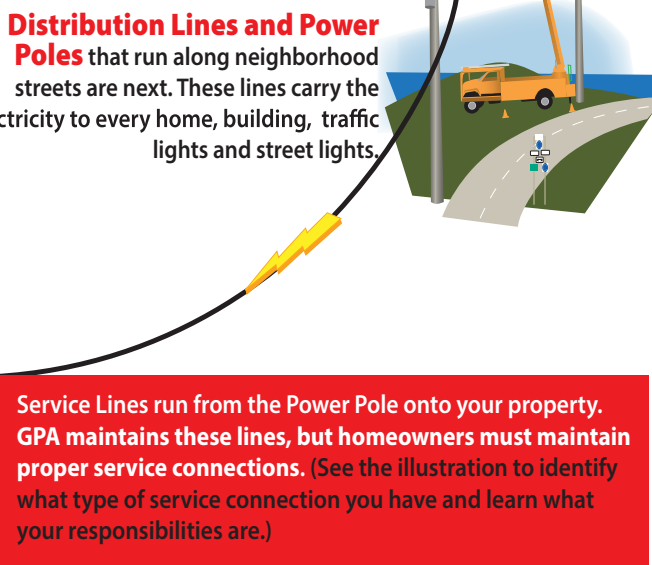
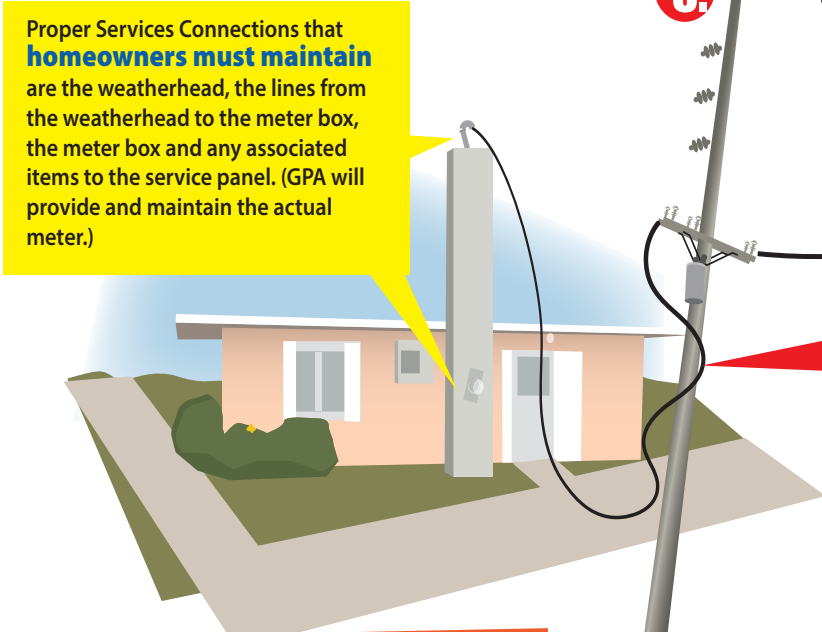
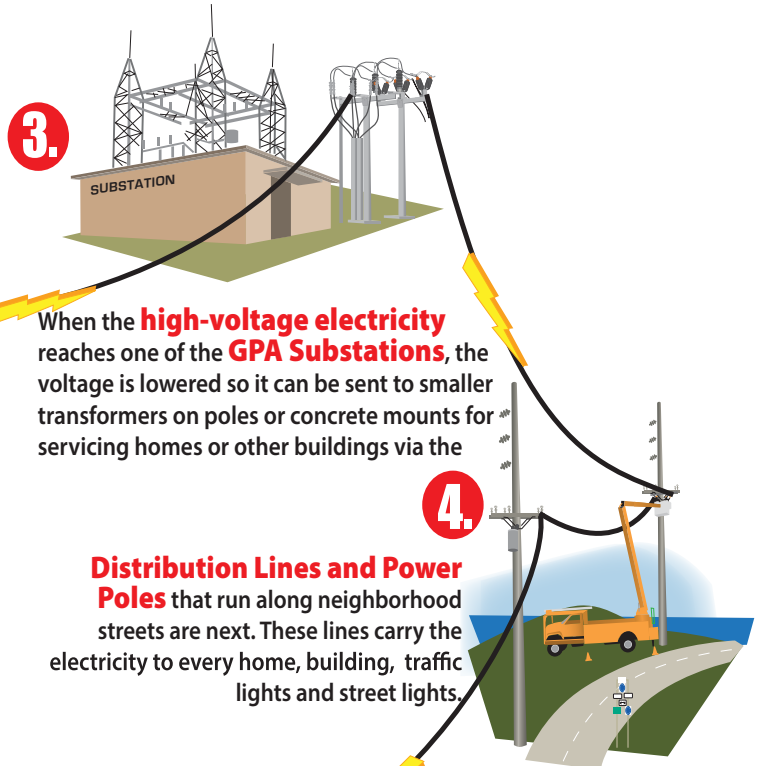
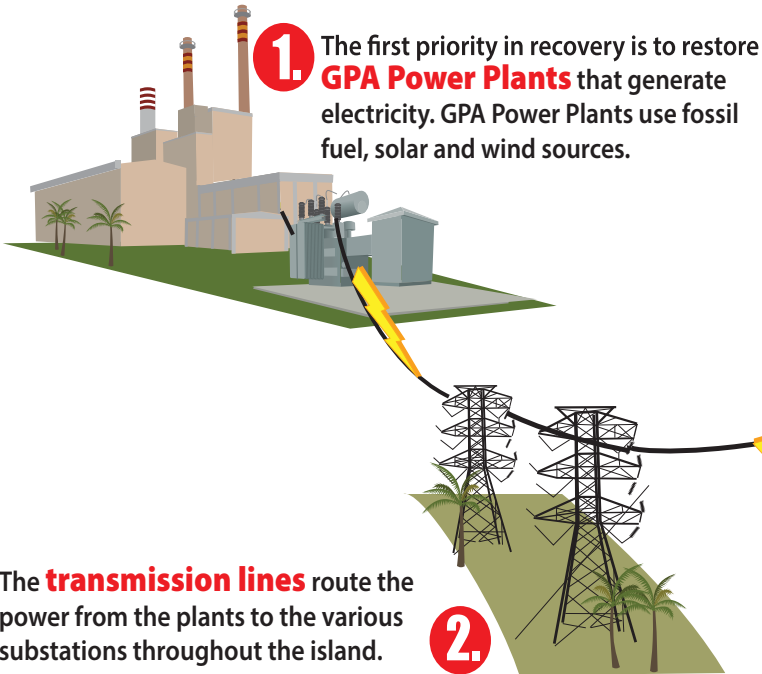


# HOW POWER IS RESTORED AFTER TROPICAL STORMS AND TYPHOONS

## How GPA Restores Power to Your Home

To restore service as quickly as possible, GPA must repair all components in the prioritized order shown below.



Remember,  
**HIGH VOLTAGE KILLS**  
Downed or dangling power lines can cause electrocution

After the storm passes, look around and be alert for fallen or downed power lines. Consider ALL fallen lines to be "live" to avoid severe injury or death.

**Electricity travels through standing water and can cause electrocution**

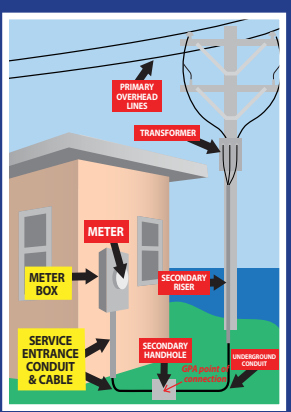
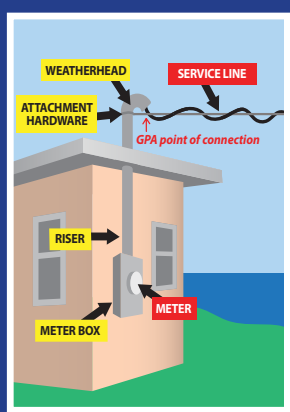
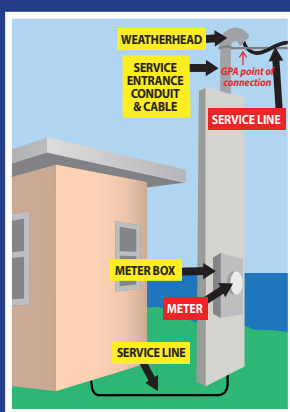
Avoid flooded areas even if they are shallow. Don't step into water in case a downed power line is touching it. Remember, the power line may be some distance away or even out of sight.

### Who is Responsible for Fixing What?

If your electrical components are damaged, you may be responsible for repairs. Identify your type of service connection below to learn more.

#### CUSTOMER'S RESPONSIBILITY

#### GPA'S RESPONSIBILITY



Want to learn more?  
[www.guampowerauthority.com](http://www.guampowerauthority.com)